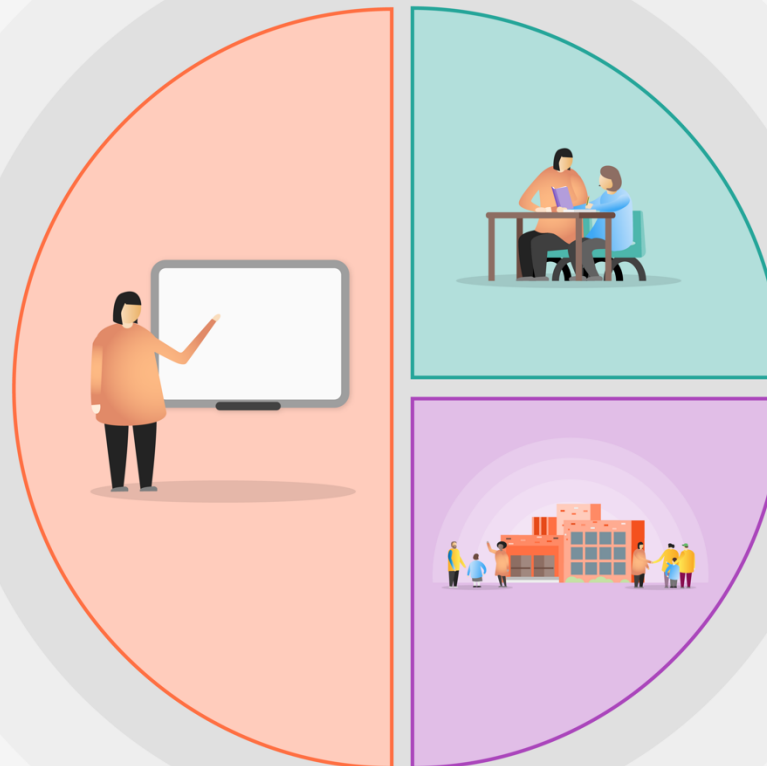


1 Teaching

- Quality first teaching supported by evidence informed CPD for teachers and support staff.
- A broad and engaging curriculum that focusses on vocabulary acquisition. Developing language and increasing cultural capital
- Focus on reading, ensuring all books are lexiled to match abilities.
- Phonics – trialling All Aboard phonics.
- NCETM – maths curriculum prioritisation.
- A continuation of focussing on whole School writing.
- Streamed lessons across the year groups for example years 1,2,3 maths. Science across the school with certain topics RE in years 4,5,6. (Catch up funding on NB to release RK),
- Foundation subject co-ordinators released to dedicate time for deep dives.



2 Targeted academic support

- Same day in class intervention linked to the content of the daily lesson.
- Specific interventions programmes led by the Teacher and Teaching Assistants.
- Nurture group missions based on Commando Joe's.
- 1:1 specialised teaching on Monday (Recovery/School led tutoring grant premium).

3 Wider strategies

- Free after school clubs to engage children and boost mental health and wellbeing.
- Engage parents/carers through workshops – outside.
- Outdoor learning – linked to the Hub.
- Character development through community projects.