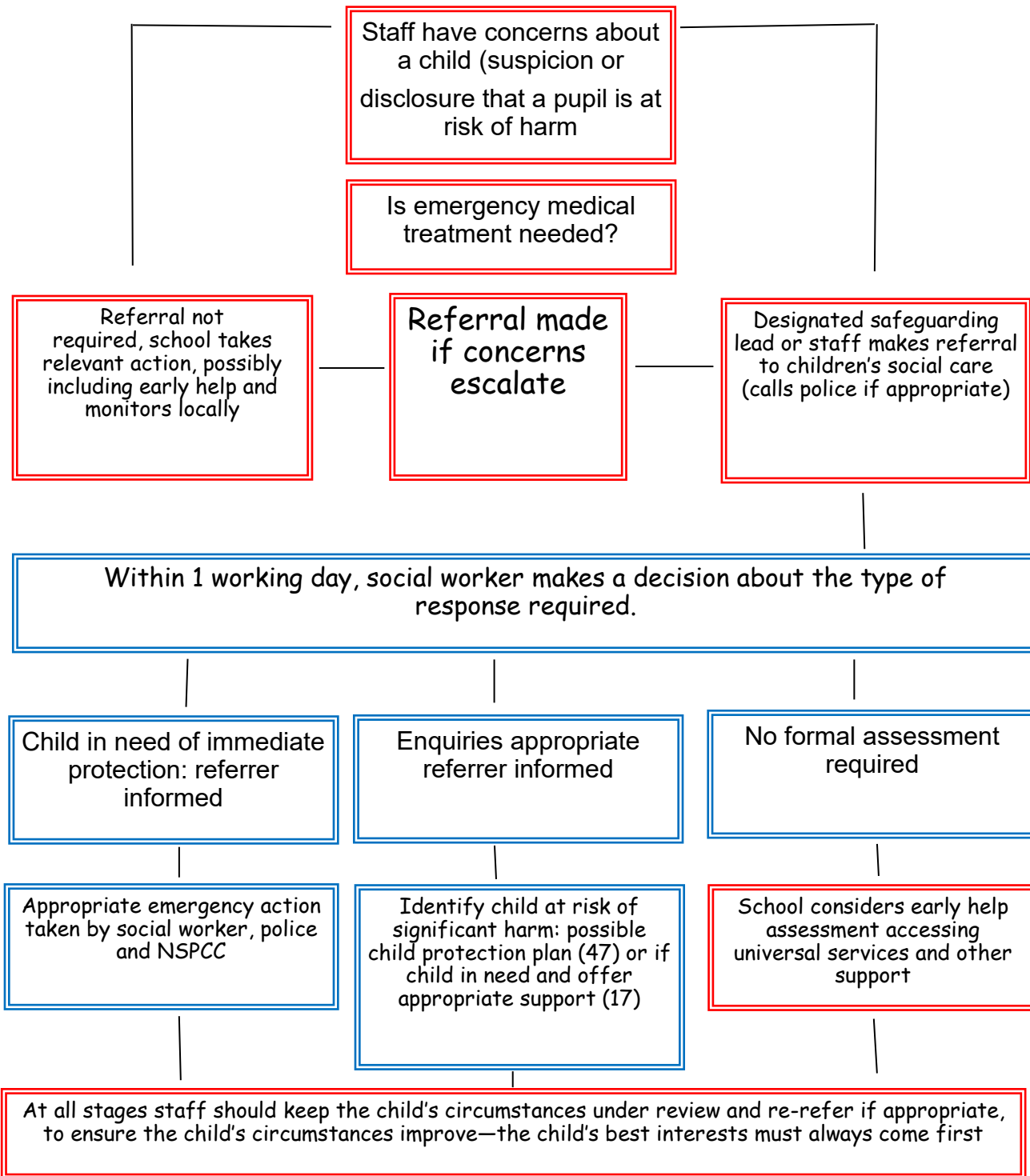


Mottram CE Aided Primary School
Actions where there are concerns about a child



School Action

Other Agency Action

1. In cases which also involve an allegation of abuse against a staff member, see Part four of this guidance. 'Keeping Children Safe in Education'.

2. Early help means providing support as soon as a problem emerges at any point in a child's life. Where a child would benefit from co-ordinated early help, an early help inter-agency assessment should be arranged. Chapter one of Working together to safeguard children provides detailed guidance on the early help process.

3. Under the Children Act 1989, local authorities are required to provide services for children in need for the purposes of safeguarding and promoting their welfare. This can include s17 assessments of children in need and s47 assessments of children at risk of significant harm. Full details are in Chapter one of Working together to safeguard children

This could include applying for an Emergency Protection Order (EPO).